

\$350,000 - Ne 16 49 4 W5 Rr 43, Rural Leduc County

MLS® #E4434568

\$350,000

0 Bedroom, 0.00 Bathroom,
Rural on 78.60 Acres

None, Rural Leduc County, AB

Beautiful 78.6 acre parcel of rolling recreational land with approximately 12 acres of open land and the balance being a mixture of poplar, spruce and birch forest. Land is fenced on three sides. The Altalink power line running along the west side of the property provides approx. \$1200 yearly revenue. GST is applicable and not included in the price.

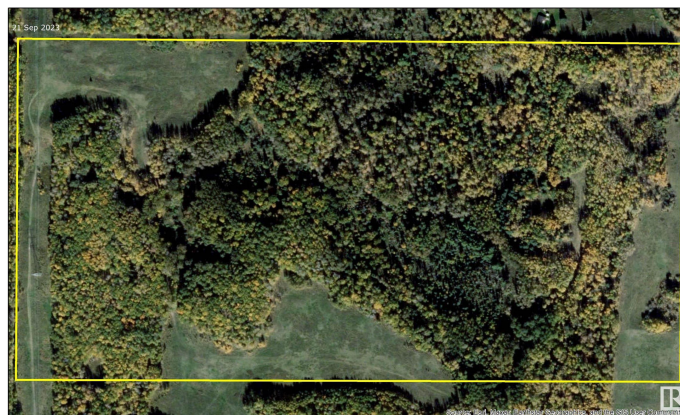
Essential Information

| | |
|-----------|-----------------|
| MLS® # | E4434568 |
| Price | \$350,000 |
| Bathrooms | 0.00 |
| Acres | 78.60 |
| Type | Rural |
| Sub-Type | Vacant Lot/Land |
| Status | Active |

Community Information

| | |
|-------------|---------------------|
| Address | Ne 16 49 4 W5 Rr 43 |
| Area | Rural Leduc County |
| Subdivision | None |
| City | Rural Leduc County |
| County | ALBERTA |
| Province | AB |
| Postal Code | T0C 0C0 |

Exterior



Exterior Features Private Setting, Recreation Use, See Remarks, Partially Fenced

Additional Information

Date Listed May 2nd, 2025

Days on Market 8

Zoning Zone 90

DATA IS DEEMED RELIABLE BUT IS NOT GUARANTEED ACCURATE BY THE REALTORS® ASSOCIATION OF EDMONTON. COPYRIGHT 2025 BY THE REALTORS® ASSOCIATION OF EDMONTON. ALL RIGHTS RESERVED.Trademarks are owned or controlled by the Canadian Real Estate Association (CREA) and identify real estate professionals who are members of CREA (REALTOR®, REALTORS®) and/or the quality of services they provide (MLS®, Multiple Listing Service®)

Listing information last updated on May 10th, 2025 at 12:02pm MDT