

\$262,900 - 133 10121 80 Avenue, Edmonton

MLS® #E4433760

\$262,900

2 Bedroom, 2.00 Bathroom, 1,003 sqft

Condo / Townhouse on 0.00 Acres

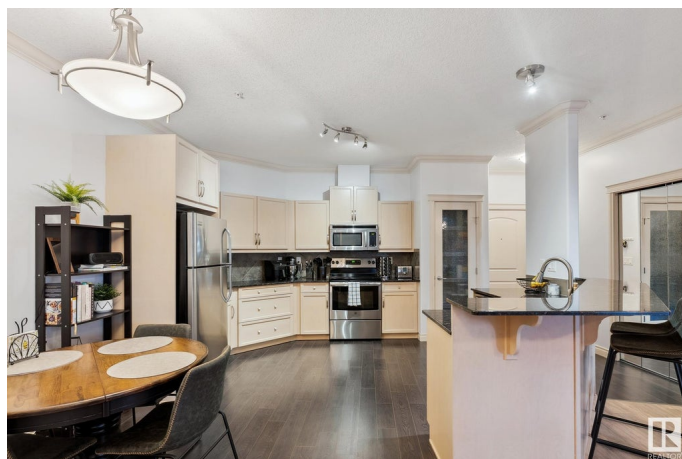
Ritchie, Edmonton, AB

Live just steps from Whyte Ave in this bright 2 bed, 2 bath condo in Scona Gardens! Over 1000 sq. ft. of open-concept space with 9'™ ceilings, central A/C, Hardwood floors & fireplace. Oversized kitchen features granite counters, stainless steel appliances & loads of storage. Enjoy a massive patio for summer evenings. The primary suite offers a walk-in closet & private ensuite. Includes in-suite laundry, 2 underground parking stalls, storage, plus building gym, guest suite, car wash & more. Walk to shops, markets, cafes, & easy bus access to U of A. Urban living at its best!

Built in 2006

Essential Information

MLS® #	E4433760
Price	\$262,900
Bedrooms	2
Bathrooms	2.00
Full Baths	2
Square Footage	1,003
Acres	0.00
Year Built	2006
Type	Condo / Townhouse
Sub-Type	Lowrise Apartment
Style	Single Level Apartment
Status	Active



Community Information

Address	133 10121 80 Avenue
Area	Edmonton
Subdivision	Ritchie
City	Edmonton
County	ALBERTA
Province	AB
Postal Code	T6E 0B9

Amenities

Amenities	Air Conditioner, Car Wash, Carbon Monoxide Detectors, Closet Organizers, Deck, Detectors Smoke, Exercise Room, Guest Suite, Intercom, Parking-Visitor, Party Room, Patio, Recreation Room/Centre, Secured Parking, Security Door, Storage-Locker Room, Vinyl Windows, See Remarks, Heat Exchanger
Parking Spaces	2
Parking	Underground

Interior

Interior Features	ensuite bathroom
Appliances	Dryer, Microwave Hood Fan, Refrigerator, Stove-Electric, Washer
Heating	Fan Coil, Natural Gas
Fireplace	Yes
Fireplaces	Mantel
# of Stories	4
Stories	1
Has Basement	Yes
Basement	None, No Basement

Exterior

Exterior	Wood, Stone, Vinyl, Hardie Board Siding
Exterior Features	Flat Site, Private Setting, Schools, Shopping Nearby
Roof	Asphalt Shingles
Construction	Wood, Stone, Vinyl, Hardie Board Siding
Foundation	Concrete Perimeter

Additional Information

Date Listed	May 1st, 2025
Days on Market	1
Zoning	Zone 17

Condo Fee \$700

DATA IS DEEMED RELIABLE BUT IS NOT GUARANTEED ACCURATE BY THE REALTORS® ASSOCIATION OF EDMONTON. COPYRIGHT 2025 BY THE REALTORS® ASSOCIATION OF EDMONTON. ALL RIGHTS RESERVED.Trademarks are owned or controlled by the Canadian Real Estate Association (CREA) and identify real estate professionals who are members of CREA (REALTOR®, REALTORS®) and/or the quality of services they provide (MLS®, Multiple Listing Service®)

Listing information last updated on May 2nd, 2025 at 6:17pm MDT