

\$649,999 - 13 52508 Rge Road 21, Rural Parkland County

MLS® #E4433650

\$649,999

5 Bedroom, 3.00 Bathroom, 1,581 sqft
Rural on 1.30 Acres

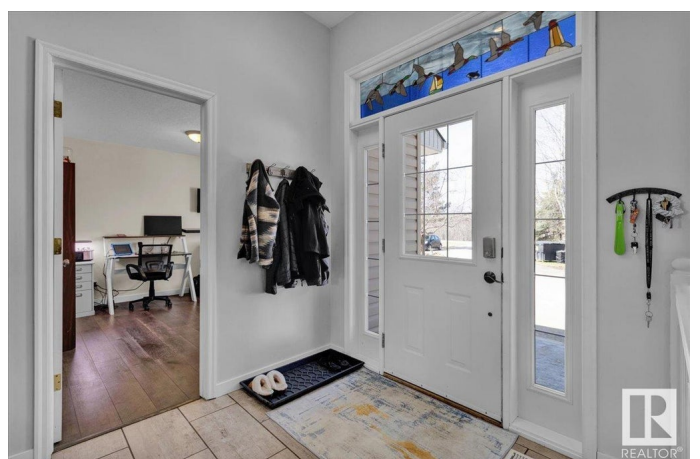
Heatherlea, Rural Parkland County, AB

This stunning 5-bedroom bungalow offers new shingles (2023), spacious and open-concept living with vaulted ceilings and hardwood flooring throughout the main floor. The bright kitchen features a large island with a breakfast bar, tile, stainless steel appliances, and flows seamlessly into the dining and living areas. The main floor includes a laundry room, 2 bedrooms, a 4pc bath, and a spacious primary suite with a walk-in closet and 4pc ensuite featuring a soaker tub and separate shower. The walkout basement is fully finished with a large rec room, 2 more bedrooms, and a 3pc bath. Enjoy the outdoors on a treed, private lot with a pond, large upper deck, walkout patio area, chicken coop and fenced dog run. A paved driveway leads to the double attached garage, making parking a breeze. Located only 15 minutes from Stony Plain, this home has it all!

Built in 2004

Essential Information

| | |
|-----------|-----------|
| MLS® # | E4433650 |
| Price | \$649,999 |
| Bedrooms | 5 |
| Bathrooms | 3.00 |



| | |
|----------------|------------------------|
| Full Baths | 3 |
| Square Footage | 1,581 |
| Acres | 1.30 |
| Year Built | 2004 |
| Type | Rural |
| Sub-Type | Detached Single Family |
| Style | Bungalow |
| Status | Active |

Community Information

| | |
|-------------|-----------------------|
| Address | 13 52508 Rge Road 21 |
| Area | Rural Parkland County |
| Subdivision | Heatherlea |
| City | Rural Parkland County |
| County | ALBERTA |
| Province | AB |
| Postal Code | T0E 0H0 |

Amenities

| | |
|----------|--|
| Features | Ceiling 9 ft., Closet Organizers, Deck, Detectors Smoke, Dog Run-Fenced In, Patio, R.V. Storage, Vaulted Ceiling, Walkout Basement |
|----------|--|

Interior

| | |
|-------------------|---------------------------|
| Interior Features | ensuite bathroom |
| Heating | Forced Air-1, Natural Gas |
| Fireplace | Yes |
| Stories | 2 |
| Has Basement | Yes |
| Basement | Full, Finished |

Exterior

| | |
|-------------------|--|
| Exterior | Wood |
| Exterior Features | Environmental Reserve, Fenced, Golf Nearby, Hillside, Landscaped, Park/Reserve, Playground Nearby, Private Setting, Schools, Treed Lot |
| Construction | Wood |
| Foundation | Preserved Wood |

Additional Information

| | |
|-------------|---------------|
| Date Listed | May 1st, 2025 |
|-------------|---------------|

Days on Market 1

Zoning Zone 90

DATA IS DEEMED RELIABLE BUT IS NOT GUARANTEED ACCURATE BY THE REALTORS® ASSOCIATION OF EDMONTON. COPYRIGHT 2025 BY THE REALTORS® ASSOCIATION OF EDMONTON. ALL RIGHTS RESERVED. Trademarks are owned or controlled by the Canadian Real Estate Association (CREA) and identify real estate professionals who are members of CREA (REALTOR®, REALTORS®) and/or the quality of services they provide (MLS®, Multiple Listing Service®)

Listing information last updated on May 2nd, 2025 at 7:47pm MDT