

Courtesy Of Jamie L Bhatti and Harman Bhatti Of Royal Lepage Arteam Realty

\$499,900 - 9928 221 Street, Edmonton

MLS® #E4433373

\$499,900

3 Bedroom, 2.50 Bathroom, 1,680 sqft
Single Family on 0.00 Acres

Secord, Edmonton, AB

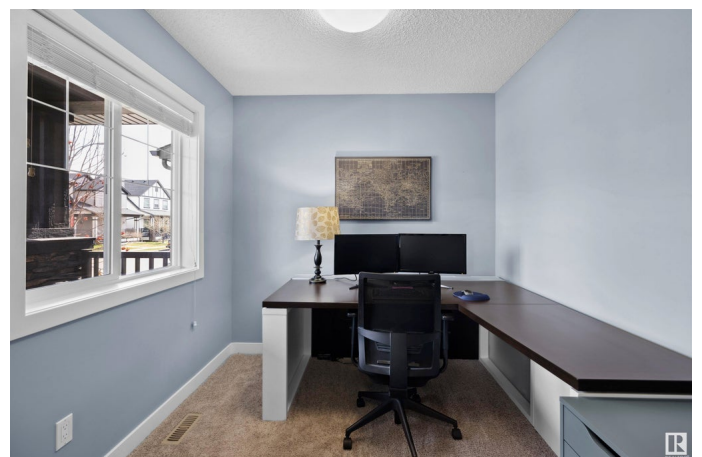
Craftsman style home in Secord with great curb appeal! The main floor features a dedicated den—perfect for working from home—as well as a spacious kitchen equipped with ample counter space and a gas stove, ideal for the home chef. The open-concept layout continues into a generous dining area and a bright, inviting living room—an ideal space for entertaining guests. Upstairs you'll find a large owner's suite with 4 piece ensuite and walk in closet. You'll also find two additional bedrooms, a full bathroom, and a conveniently located laundry room on the upper level. The basement is unfinished and ready for you to design your future living space perfect for your family's needs. Step outside to enjoy your west-facing backyard, complete with a large deck that's perfect for summer evenings, whether you're relaxing by the fire table or grilling with friends. Additional features include air conditioning and a double detached garage. Enjoy everything this neighborhood has to offer, shopping, parks and schools.

Built in 2014

Essential Information

MLS® # E4433373

Price \$499,900



Bedrooms	3
Bathrooms	2.50
Full Baths	2
Half Baths	1
Square Footage	1,680
Acres	0.00
Year Built	2014
Type	Single Family
Sub-Type	Detached Single Family
Style	2 Storey
Status	Active

Community Information

Address	9928 221 Street
Area	Edmonton
Subdivision	Secord
City	Edmonton
County	ALBERTA
Province	AB
Postal Code	T5T 4M7

Amenities

Amenities	Air Conditioner, Deck, Hot Water Natural Gas
Parking	Double Garage Detached

Interior

Interior Features	ensuite bathroom
Appliances	Dishwasher-Built-In, Dryer, Microwave Hood Fan, Refrigerator, Stove-Gas, Washer
Heating	Forced Air-1, Natural Gas
Stories	2
Has Basement	Yes
Basement	Full, Unfinished

Exterior

Exterior	Wood, Vinyl
Exterior Features	Back Lane, Fenced, Landscaped, Low Maintenance Landscape, No Through Road, Playground Nearby, Public Transportation, Schools
Roof	Asphalt Shingles

Construction Wood, Vinyl
Foundation Concrete Perimeter

Additional Information

Date Listed April 30th, 2025

Days on Market 2

Zoning Zone 58

DATA IS DEEMED RELIABLE BUT IS NOT GUARANTEED ACCURATE BY THE REALTORS® ASSOCIATION OF EDMONTON. COPYRIGHT 2025 BY THE REALTORS® ASSOCIATION OF EDMONTON. ALL RIGHTS RESERVED. Trademarks are owned or controlled by the Canadian Real Estate Association (CREA) and identify real estate professionals who are members of CREA (REALTOR®, REALTORS®) and/or the quality of services they provide (MLS®, Multiple Listing Service®)

Listing information last updated on May 1st, 2025 at 8:47pm MDT