

\$405,900 - 6805 Cardinal Link, Edmonton

MLS® #E4433161

\$405,900

2 Bedroom, 2.50 Bathroom, 1,227 sqft

Single Family on 0.00 Acres

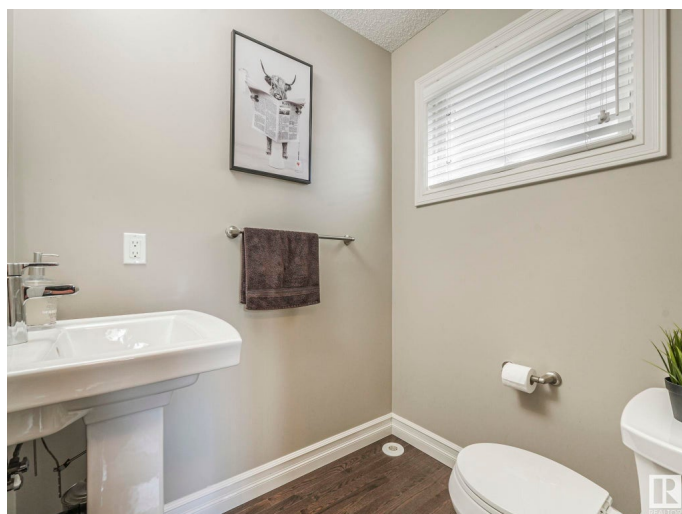
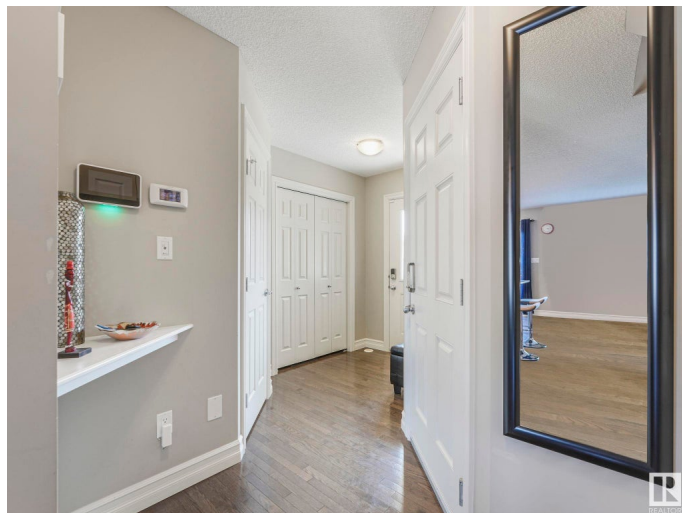
Chappelle Area, Edmonton, AB

Step into style and comfort with this beautifully kept half duplex in the family-friendly community of Chappelle! This high-efficiency home features triple pane windows, a high-efficiency furnace, and hot water on demand. The open-concept living room offers a cozy natural gas fireplace and leads to a spacious backyard with an upgraded 11x12 deck, gas BBQ hookup, and garden shed. Upstairs, enjoy two generous master bedrooms with private ensuites and a convenient second-level laundry with upgraded washer and dryer. The spacious unfinished basement is ready for your personal touch. Attached single garage and nearby parks make this home perfect for everyone!

Built in 2013

Essential Information

MLS® #	E4433161
Price	\$405,900
Bedrooms	2
Bathrooms	2.50
Full Baths	2
Half Baths	1
Square Footage	1,227
Acres	0.00
Year Built	2013



Type	Single Family
Sub-Type	Half Duplex
Style	2 Storey
Status	Active

Community Information

Address	6805 Cardinal Link
Area	Edmonton
Subdivision	Chappelle Area
City	Edmonton
County	ALBERTA
Province	AB
Postal Code	T6W 1Y9

Amenities

Amenities	No Smoking Home
Parking	Single Garage Attached

Interior

Interior Features	ensuite bathroom
Appliances	Dishwasher-Built-In, Dryer, Microwave Hood Fan, Refrigerator, Storage Shed, Stove-Electric, Washer, Window Coverings, TV Wall Mount
Heating	Forced Air-1, Natural Gas
Fireplace	Yes
Fireplaces	Tile Surround
Stories	2
Has Basement	Yes
Basement	Full, Unfinished

Exterior

Exterior	Wood, Vinyl
Exterior Features	Landscaped, Playground Nearby, Schools, Shopping Nearby
Roof	Asphalt Shingles
Construction	Wood, Vinyl
Foundation	Concrete Perimeter

Additional Information

Date Listed	April 28th, 2025
Days on Market	3

Zoning	Zone 55
HOA Fees	100
HOA Fees Freq.	Annually

DATA IS DEEMED RELIABLE BUT IS NOT GUARANTEED ACCURATE BY THE REALTORS® ASSOCIATION OF EDMONTON. COPYRIGHT 2025 BY THE REALTORS® ASSOCIATION OF EDMONTON. ALL RIGHTS RESERVED. Trademarks are owned or controlled by the Canadian Real Estate Association (CREA) and identify real estate professionals who are members of CREA (REALTOR®, REALTORS®) and/or the quality of services they provide (MLS®, Multiple Listing Service®)

Listing information last updated on May 1st, 2025 at 6:02am MDT