

\$420,000 - 11611 111 Avenue, Edmonton

MLS® #E4432008

\$420,000

3 Bedroom, 1.00 Bathroom, 1,392 sqft
Single Family on 0.00 Acres

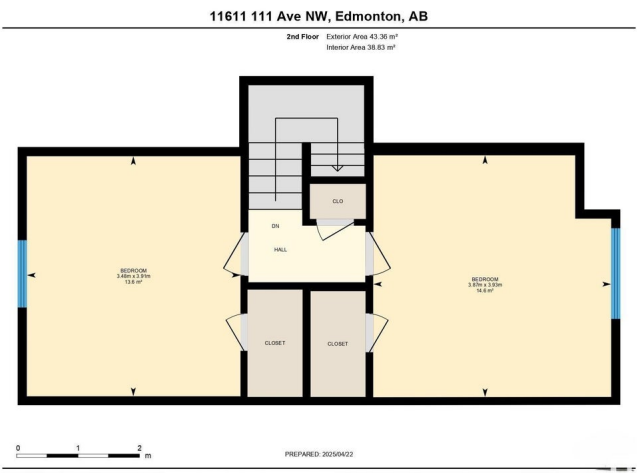
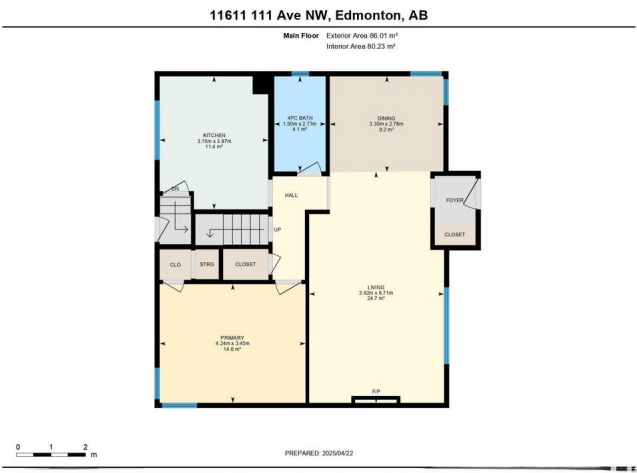
Queen Mary Park, Edmonton, AB

Queen Mary Park is a hidden gem in the heart of Edmonton. The vibrant neighbourhood features shopping, restaurants, parks, playgrounds & amenities all within walking distance. This 1951 semi-bungalow is a classic home with 1392sqft of living space – 3 bedrooms, 1-bathroom, single detached garage – all located on a 7282sqft lot. Step inside this beautiful home & you will fall in love with the bright & open feeling. From the living to the dining room to the kitchen the flow from each to the other connects this home perfectly. A bedroom, 4-piece bath completes the main level. Upstairs you will enjoy the architectural features of the ceilings & 2 spacious bedrooms. Outside – the fully landscaped & fenced yard provides the perfect space to relax in the south facing yard. This home has been loved throughout the years with so many upgrades!

Built in 1951

Essential Information

MLS® #	E4432008
Price	\$420,000
Bedrooms	3
Bathrooms	1.00
Full Baths	1
Square Footage	1,392



Acres	0.00
Year Built	1951
Type	Single Family
Sub-Type	Detached Single Family
Style	1 and Half Storey
Status	Active

Community Information

Address	11611 111 Avenue
Area	Edmonton
Subdivision	Queen Mary Park
City	Edmonton
County	ALBERTA
Province	AB
Postal Code	T6G 0E2

Amenities

Amenities	Deck, Detectors Smoke
Parking Spaces	2
Parking	Single Garage Detached

Interior

Appliances	Dishwasher-Built-In, Dryer, Refrigerator, Stove-Electric, Washer
Heating	Forced Air-1, Natural Gas
Stories	3
Has Basement	Yes
Basement	Full, Unfinished

Exterior

Exterior	Wood, Vinyl
Exterior Features	Back Lane, Fenced, Landscaped, Paved Lane, Public Transportation, Schools, Shopping Nearby, Treed Lot
Roof	Asphalt Shingles
Construction	Wood, Vinyl
Foundation	Concrete Perimeter

School Information

Elementary	John A Mcdougall School
Middle	Spruce Avenue School

High Victoria School

Additional Information

Date Listed April 22nd, 2025

Days on Market 10

Zoning Zone 08

DATA IS DEEMED RELIABLE BUT IS NOT GUARANTEED ACCURATE BY THE REALTORS® ASSOCIATION OF EDMONTON. COPYRIGHT 2025 BY THE REALTORS® ASSOCIATION OF EDMONTON. ALL RIGHTS RESERVED. Trademarks are owned or controlled by the Canadian Real Estate Association (CREA) and identify real estate professionals who are members of CREA (REALTOR®, REALTORS®) and/or the quality of services they provide (MLS®, Multiple Listing Service®)

Listing information last updated on May 2nd, 2025 at 9:32am MDT