

\$439,900 - 16903 110 Street, Edmonton

MLS® #E4431567

\$439,900

5 Bedroom, 2.50 Bathroom, 1,240 sqft
Single Family on 0.00 Acres

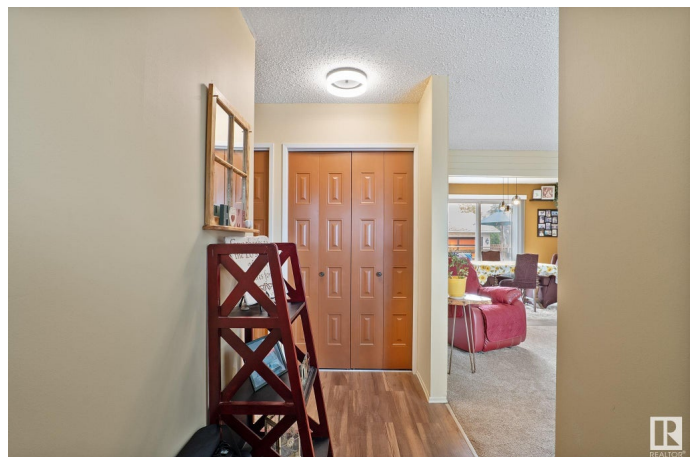
Baturyn, Edmonton, AB

This lovingly maintained bungalow offers you the perfect blend of comfort, space, and modern amenities, all situated in Baturyn. Enjoy cooking in a newly renovated kitchen featuring a new dishwasher, a modern stove, an updated countertop, sink, taps, and backsplash. The kitchen floor is brand new, and it has been freshly painted for a crisp, clean look. The spacious front room is filled with natural light thanks to large windows and boasts new carpeting and fresh paint. A wood-burning fireplace provides warmth charm. The dining room flows seamlessly to a newly built deck through sliding doors, perfect for entertaining or enjoying outdoor meals. Primary bedroom well sized and features a half bath. Two other bedrooms a very good size with new carpeting. Main bath features soothing jacuzzi tub. Basement fully developed features expansive family Rec. room with large area for exercise room. Dry bar with lots of storage. Large oversized garage 220 V wire. Rear yard treed and inviting plus much more

Built in 1976

Essential Information

MLS® #	E4431567
Price	\$439,900



Bedrooms	5
Bathrooms	2.50
Full Baths	2
Half Baths	1
Square Footage	1,240
Acres	0.00
Year Built	1976
Type	Single Family
Sub-Type	Detached Single Family
Style	Bungalow
Status	Active

Community Information

Address	16903 110 Street
Area	Edmonton
Subdivision	Baturyn
City	Edmonton
County	ALBERTA
Province	AB
Postal Code	T5X 2N7

Amenities

Amenities	Deck, No Animal Home, No Smoking Home, See Remarks
Parking	Double Garage Detached, Over Sized, Shop, See Remarks

Interior

Interior Features	ensuite bathroom
Appliances	Dishwasher-Built-In, Dryer, Garage Control, Garage Opener, Refrigerator, Storage Shed, Stove-Electric, Washer, Window Coverings, See Remarks
Heating	Forced Air-1, Natural Gas
Fireplace	Yes
Fireplaces	Corner, See Remarks
Stories	2
Has Basement	Yes
Basement	Full, Finished

Exterior

Exterior	Wood, Stucco, Vinyl
----------	---------------------

Exterior Features	Backs Onto Park/Trees, Fenced, Fruit Trees/Shrubs, Playground Nearby, Public Transportation, Schools, Shopping Nearby
Roof	Asphalt Shingles
Construction	Wood, Stucco, Vinyl
Foundation	Concrete Perimeter

Additional Information

Date Listed	April 17th, 2025
Days on Market	15
Zoning	Zone 27

DATA IS DEEMED RELIABLE BUT IS NOT GUARANTEED ACCURATE BY THE REALTORS® ASSOCIATION OF EDMONTON. COPYRIGHT 2025 BY THE REALTORS® ASSOCIATION OF EDMONTON. ALL RIGHTS RESERVED.Trademarks are owned or controlled by the Canadian Real Estate Association (CREA) and identify real estate professionals who are members of CREA (REALTOR®, REALTORS®) and/or the quality of services they provide (MLS®, Multiple Listing Service®)

Listing information last updated on May 2nd, 2025 at 9:18am MDT