

\$769,000 - 6303 29 Street, Rural Leduc County

MLS® #E4430039

\$769,000

5 Bedroom, 4.00 Bathroom, 2,400 sqft

Rural on 0.00 Acres

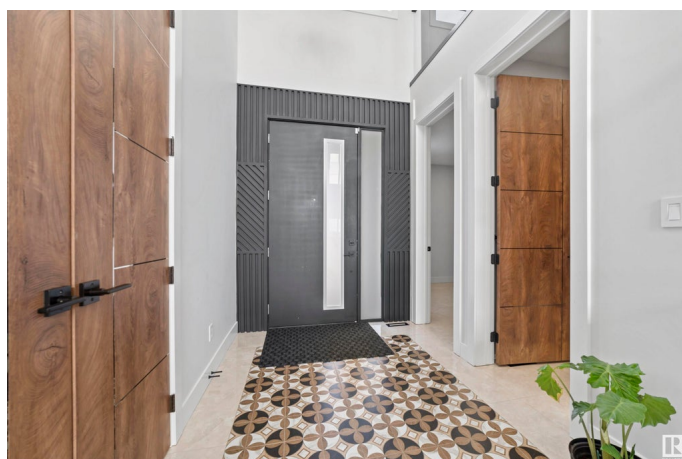
Churchill Meadow, Rural Leduc County, AB

This exceptional corner 32-pocket lot sits on over 5,000 sq ft of land and backs onto a beautiful green space. Featuring a custom-built approx. 2,400 sq. ft home with 4 Master Bedrooms with 4 ensuite bathrooms, this property offers spacious and thoughtful design throughout. Highlights include a spice kitchen, quartz countertops, 9â€10-20 ft ceilings, open-to-below layout, feature walls, and an oversized double garage with an 18x8 ft garage door. Enjoy a larger backyard perfect for entertaining or relaxing. Conveniently located just 10 minutes from Costco, Walmart, the airport, bilingual schools, and everyday amenities. Please note: Photos shown are of a similar home by the same builder; finishes and layout may vary. Basement can be added for additional cost.

Built in 2025

Essential Information

MLS® #	E4430039
Price	\$769,000
Bedrooms	5
Bathrooms	4.00
Full Baths	4
Square Footage	2,400
Acres	0.00
Year Built	2025



Type	Rural
Sub-Type	Detached Single Family
Style	2 Storey
Status	Active

Community Information

Address	6303 29 Street
Area	Rural Leduc County
Subdivision	Churchill Meadow
City	Rural Leduc County
County	ALBERTA
Province	AB
Postal Code	T4X 3A7

Amenities

Features	On Street Parking, Carbon Monoxide Detectors, Ceiling 10 ft., Ceiling 9 ft., Closet Organizers, Deck, Insulation-Upgraded, No Animal Home, No Smoking Home, Parking-Plug-Ins, Smart/Program. Thermostat, Wet Bar, See Remarks, Vacuum System-Roughed-In, HRV System, Natural Gas BBQ Hookup, Natural Gas Stove Hookup, 9 ft. Basement Ceiling
Parking Spaces	2

Interior

Interior Features	ensuite bathroom
Heating	Forced Air-1, Natural Gas
Fireplace	Yes
Stories	2
Has Basement	Yes
Basement	Full, Unfinished

Exterior

Exterior	Wood
Exterior Features	Airport Nearby, Backs Onto Park/Trees, Corner Lot, Golf Nearby, No Back Lane, Schools, Shopping Nearby, See Remarks, Street Lighting, Partially Fenced
Construction	Wood
Foundation	Concrete Perimeter

Additional Information

Date Listed	April 10th, 2025
-------------	------------------

Days on Market 22

Zoning Zone 80

DATA IS DEEMED RELIABLE BUT IS NOT GUARANTEED ACCURATE BY THE REALTORS® ASSOCIATION OF EDMONTON. COPYRIGHT 2025 BY THE REALTORS® ASSOCIATION OF EDMONTON. ALL RIGHTS RESERVED. Trademarks are owned or controlled by the Canadian Real Estate Association (CREA) and identify real estate professionals who are members of CREA (REALTOR®, REALTORS®) and/or the quality of services they provide (MLS®, Multiple Listing Service®)

Listing information last updated on May 1st, 2025 at 10:47pm MDT