

\$3,958,461 - Twpr 510 And Rr 240, Rural Leduc County

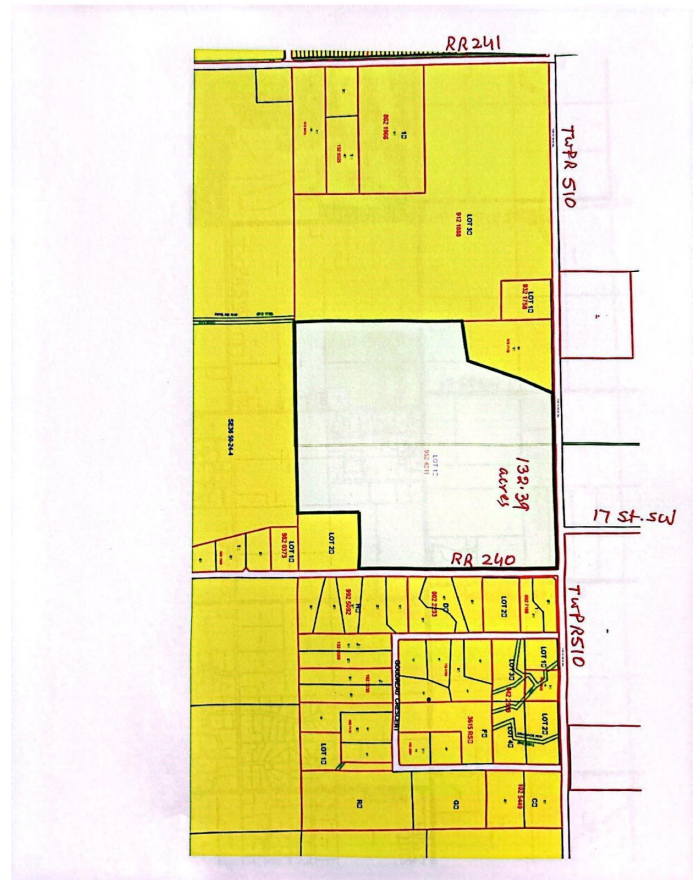
MLS® #E4399631

\$3,958,461

0 Bedroom, 0.00 Bathroom,
Rural on 132.39 Acres

None, Rural Leduc County, AB

132.39 acres, more or less, located on TWPR 510 Between RR 241 & 240 in Leduc County. It is extremely well located excellent piece of land just steps east of city of Beaumont, on SW Corner of TWPR 510 and RR 240. It is a great holding property for future developments situated only two minutes east of Beaumont's Colonial golf course and only five minutes to Eagle Rock Golf course on RR 234 & TWPR 510. Easy Access to city of Beaumont, City of Edmonton south side, South Edmonton shopping establishments, 15 minutes to Edmonton International Airport and Nisku and city of Leduc Industrial Business parks. It is Certainly a great investment for future developments.



Scanned with CamScanner

Essential Information

MLS® #	E4399631
Price	\$3,958,461
Bathrooms	0.00
Acres	132.39
Type	Rural
Sub-Type	Vacant Lot/Land
Status	Active

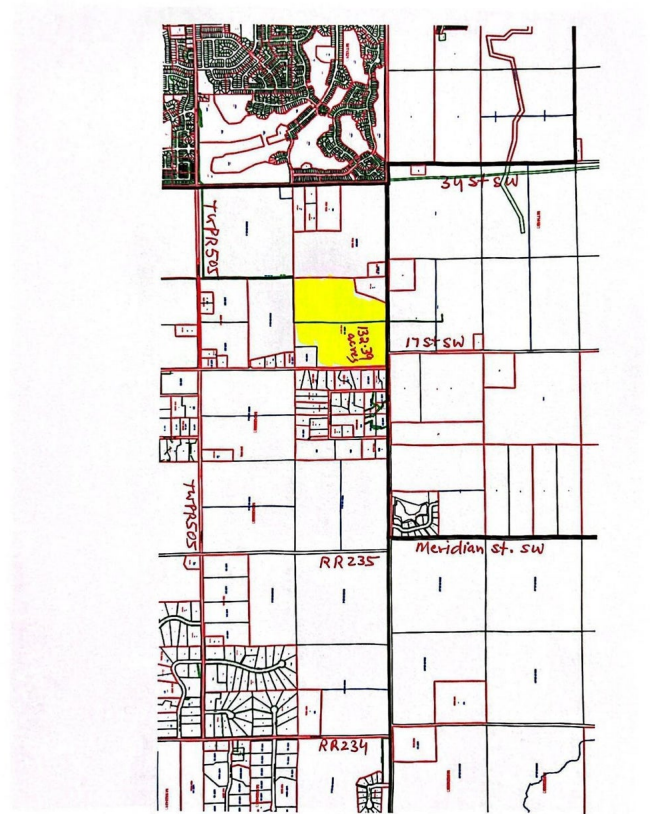
Community Information

Address	Twpr 510 And Rr 240
---------	---------------------

Area	Rural Leduc County
Subdivision	None
City	Rural Leduc County
County	ALBERTA
Province	AB
Postal Code	T4X 0T1

Additional Information

Date Listed	July 28th, 2024
Days on Market	346
Zoning	Zone 80



Scanned with CamScanner

DATA IS DEEMED RELIABLE BUT IS NOT GUARANTEED ACCURATE BY THE REALTORS® ASSOCIATION OF EDMONTON. COPYRIGHT 2025 BY THE REALTORS® ASSOCIATION OF EDMONTON. ALL RIGHTS RESERVED. Trademarks are owned or controlled by the Canadian Real Estate Association (CREA) and identify real estate professionals who are members of CREA (REALTOR®, REALTORS®, and/or the quality of services they provide (MLS®, Multiple Listing Service®)

Listing information last updated on July 9th, 2025 at 12:17am MDT



Scanned with CamScanner