

\$1,649,000 - 12815 Winterburn Road Nw, Edmonton

MLS® #E4386222

\$1,649,000

5 Bedroom, 4.00 Bathroom, 2,403 sqft
Single Family on 9.99 Acres

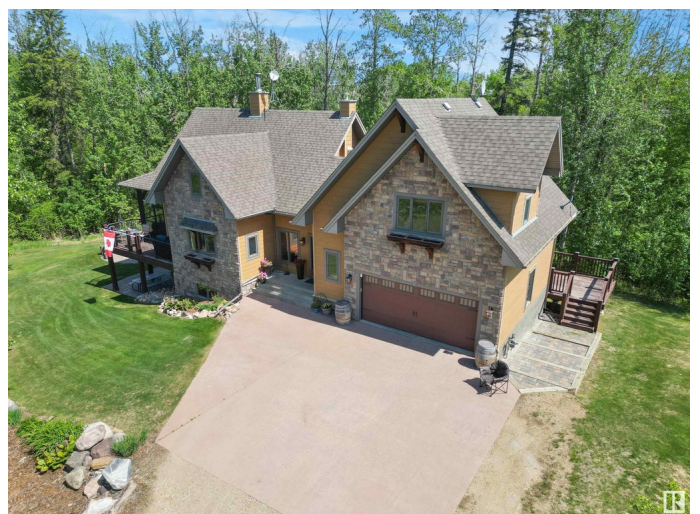
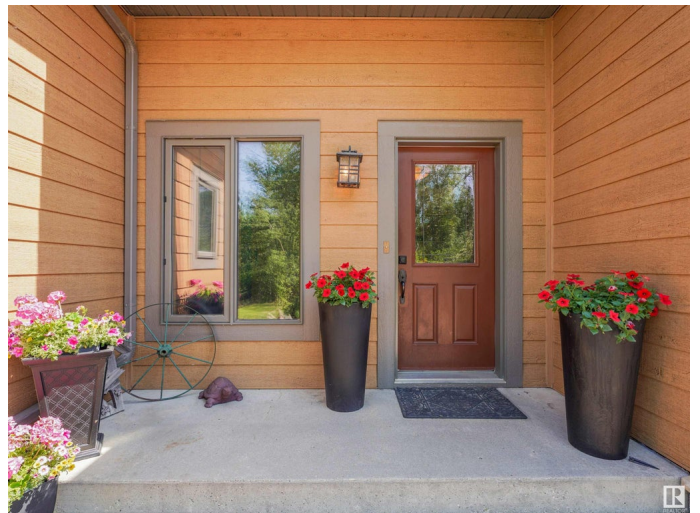
Trumpeter Area, Edmonton, AB

Custom Home on 10 Acres of Wooded Landscape within the Edmonton City Limits. Step through the front entrance and be met by the impeccable craftsmanship throughout. The Douglas fir doors and trim are complemented by a staircase that ascends from the walkout basement to the 2nd-floor loft, wrapping around a stone fireplace. The kitchen features walnut cabinets, island, heated slate tile and Quartz Counters. Revel in the grandeur of the LR with its soaring 17' vaulted ceiling, distressed walnut floors, and panoramic views from the windows and the screened in covered deck. This home boasts 2 primary bedrooms. The main primary with a NG fireplace, his and hers closets, and a walk-in closet accessible through the 5-pce ensuite. The 2nd primary has a loft area and a 4-pce ensuite with a custom shower. The walkout basement opens to a brick patio w/ firepit, infloor heating, a 4th bed, and an office. The outdoor facilities include a 24x53 heated shop with 220 amp, a sea-can storage building and a mobile home.

Built in 2007

Essential Information

MLS® #	E4386222
Price	\$1,649,000
Bedrooms	5



Bathrooms	4.00
Full Baths	4
Square Footage	2,403
Acres	9.99
Year Built	2007
Type	Single Family
Sub-Type	Residential Detached Single Family
Style	1 and Half Storey

Community Information

Address	12815 Winterburn Road Nw
Area	Edmonton
Subdivision	Trumpeter Area
City	Edmonton
County	ALBERTA
Province	AB
Postal Code	T5S 2B9

Amenities

Amenities	Air Conditioner, Closet Organizers, Deck, Detectors Smoke, Fire Pit, Hot Water Natural Gas, No Smoking Home, Parking-Extra, Patio, R.V. Storage, Vaulted Ceiling, Workshop, Natural Gas BBQ Hookup
Features	Air Conditioner, Closet Organizers, Deck, Detectors Smoke, Fire Pit, Hot Water Natural Gas, No Smoking Home, Parking-Extra, Patio, R.V. Storage, Vaulted Ceiling, Workshop, Natural Gas BBQ Hookup
Parking	Double Garage Attached, Triple Garage Detached
# of Garages	5

Interior

Interior	Ceramic Tile, Hardwood, Slate
Interior Features	Air Conditioning-Central, Compactor, Dishwasher-Built-In, Dryer, Fan-Ceiling, Garburator, Microwave Hood Cover, Refrigerator, Storage Shed, Stove-Gas, Vacuum Systems, Washer, Window Coverings, Garage heater
Heating	Forced Air-2, In Floor Heat System
Fireplace	Yes
Fireplaces	Gas, Wood, Mantel, Stone Facing
# of Stories	3
Has Basement	Yes
Basement	Full, Fully Finished

Exterior

Exterior	Stone, Hardie Board Siding
Exterior Features	Backs Onto Park/Trees, Landscaped, No Back Lane, Private Setting, Recreation Use, Rolling Land, Schools, Shopping Nearby, Treed Lot
Construction	Wood Frame

Additional Information

Date Listed May 8th, 2024

DATA IS DEEMED RELIABLE BUT IS NOT GUARANTEED ACCURATE BY THE REALTORS® ASSOCIATION OF EDMONTON. COPYRIGHT 2024 BY THE REALTORS® ASSOCIATION OF EDMONTON. ALL RIGHTS RESERVED. Trademarks are owned or controlled by the Canadian Real Estate Association (CREA) and identify real estate professionals who are members of CREA (REALTOR®, REALTORS®) and/or the quality of services they provide (MLS®, Multiple Listing Service®)

Listing information last updated on November 10th, 2024 at 12:31pm MST