

Courtesy Of Ryan Brown and Drew Joslin Of NAI Commercial Real Estate Inc

# \$1,031,000 - # #200 9622 42 Av Nw Nw, Edmonton

MLS® #E4354499

**\$1,031,000**

Bedroom, Bathroom, 4,123 sqft  
Office on 0.00 Acres

Strathcona Industrial Park, Edmonton, AB

Welcome to Whitemud Business Park! This established southside office park has recently underwent a condo conversion so units are now for sale! Sizes range from 915 Sq. Ft. up to 6,964 Sq. Ft. The park has a campus-like environment designed to enhance connectivity and collaboration. On-site amenities include a gym space exclusive to building occupants and an outdoor eating/gathering area soon to be improved. Great access to Whitemud Drive, QEII, and Anthony Henday Drive. This particular unit is 4,123 Sq. Ft. of developed office space with over 20 perimeter offices with windows, kitchen area, and meeting rooms. A summary of all current availabilities can be found on the brochure, we may also have other units coming up within the building that meet your size range.

Built in 1980

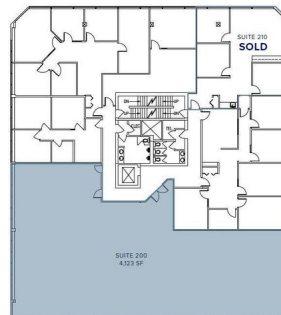
## Essential Information

MLS® #	E4354499
Price	\$1,031,000
Square Footage	4,123
Acres	0.00
Year Built	1980
Type	Office

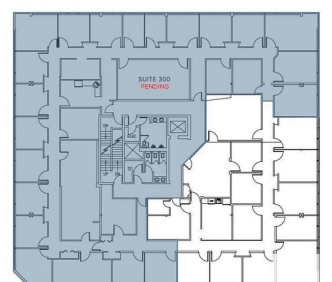
## Community Information



Building 2 - 2nd Floor



Building 3 - 3rd Floor



Address # #200 9622 42 Av Nw Nw  
Area Edmonton  
Subdivision Strathcona Industrial Park  
City Edmonton  
Province AB  
Postal Code T6E 5Y7

### **Exterior**

Construction Mixed

### **Additional Information**

Date Listed August 16th, 2023

DATA IS DEEMED RELIABLE BUT IS NOT GUARANTEED ACCURATE BY THE REALTORS® ASSOCIATION OF EDMONTON. COPYRIGHT 2024 BY THE REALTORS® ASSOCIATION OF EDMONTON. ALL RIGHTS RESERVED. Trademarks are owned or controlled by the Canadian Real Estate Association (CREA) and identify real estate professionals who are members of CREA (REALTOR®, REALTORS®) and/or the quality of services they provide (MLS®, Multiple Listing Service®)

Listing information last updated on October 31st, 2024 at 6:16pm MDT