

\$699,000 - 9551 103a Av Nw, Edmonton

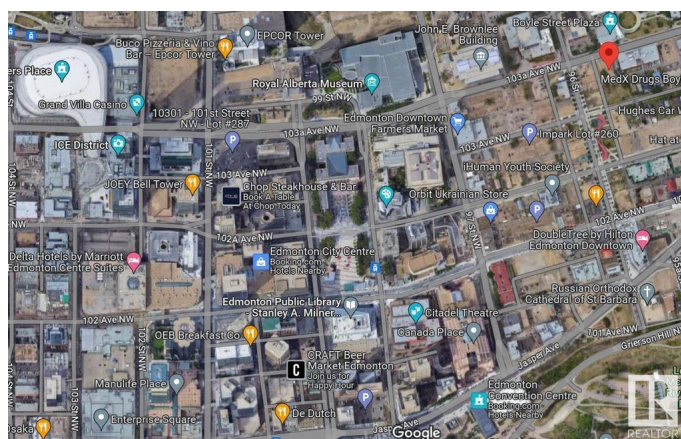
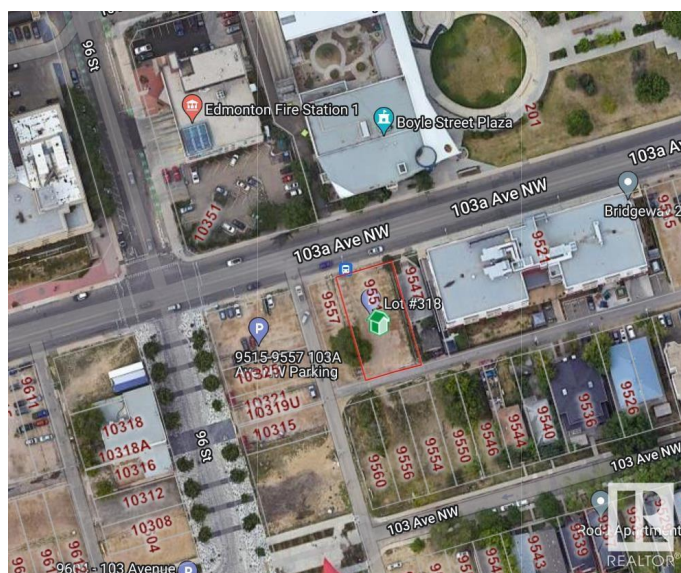
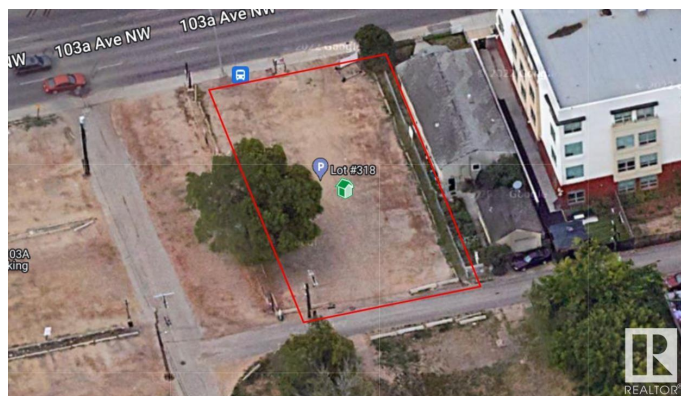
MLS® #E4351222

\$699,000

Bedroom, Bathroom,
Land Commercial on 0.19 Acres

Boyle Street, Edmonton, AB

Excellent re-development site. NOTE!
NEIGHBORING LOT ALSO FOR SALE! This
Two side by side lots totaling 748.487 square
meters. Three lots total 1,123.44 square
meters. Located 2 blocks to the Alberta
Museum, Art Gallery, Canada Place, and
Edmonton Convention center. 3 Blocks to
Edmonton's city Center, and 5 blocks to the
newly developed ice district. Prime location for
holding property or development opportunity.
Vacant land currently being used as an Impark
right across from the YMCA and kitty corner to
the Edmonton Police Service building. Total
site of three lots is approximately 12,103
square feet. Don't miss this excellent
opportunity!



Essential Information

MLS® #	E4351222
Price	\$699,000
Acres	0.19
Type	Land Commercial

Community Information

Address	9551 103a Av Nw
Area	Edmonton
Subdivision	Boyle Street
City	Edmonton

Province AB
Postal Code T5H 2B5

Additional Information

Date Listed July 20th, 2023

DATA IS DEEMED RELIABLE BUT IS NOT GUARANTEED ACCURATE BY THE REALTORS® ASSOCIATION OF EDMONTON. COPYRIGHT 2024 BY THE REALTORS® ASSOCIATION OF EDMONTON. ALL RIGHTS RESERVED. Trademarks are owned or controlled by the Canadian Real Estate Association (CREA) and identify real estate professionals who are members of CREA (REALTOR®, REALTORS®) and/or the quality of services they provide (MLS®, Multiple Listing Service®)

Listing information last updated on May 13th, 2024 at 11:46pm MDT