

# **\$364,900 - 265 22106 South Cooking Lake Road, Rural Strathcona County**

---

MLS® #E4342720

**\$364,900**

2 Bedroom, 1.00 Bathroom, 1,143 sqft

Rural on 0.31 Acres

South Cooking Lake, Rural Strathcona County, AB

For more info, click "[View Listing on REALTOR Website](#)". Are you looking to escape the city without being too far away? Look no further! Welcome home to South Cooking Lake. This charming bungalow offers a spacious living room and kitchen, 2 bedrooms, a laundry room with washer and dryer, and 4-piece bathroom. Featuring a deck at the front and back of the home to enjoy the lake views and bird watching. Property includes A/C for those hot summer days, a great storage shed for all your seasonal and outdoor items, a horseshoe driveway, Saskatoon berry trees for all your baking needs, and is located at the end of a quiet cul-de-sac! South Cooking Lake is a hidden gem just 10 minutes to the Anthony Henday, 10 minutes to Sherwood Park and 20 minutes to Tofield. A great community atmosphere, South Cooking Lake has a park, nearby schools, community centre, and additional amenities such as a restaurant, liquor store, post office and convenience store all close to home.

Built in 1985

## **Essential Information**



MLS® #	E4342720
Price	\$364,900
Bedrooms	2
Bathrooms	1.00
Full Baths	1
Square Footage	1,143
Acres	0.31
Year Built	1985
Type	Rural
Sub-Type	Residential Detached Single Family
Style	Bungalow

### **Community Information**

Address	265 22106 South Cooking Lake Road
Area	Rural Strathcona County
Subdivision	South Cooking Lake
City	Rural Strathcona County
County	ALBERTA
Province	AB
Postal Code	T8E 1J1

### **Amenities**

Amenities	Off Street, Air Conditioner, Dog Run-Fenced In
Features	Off Street, Air Conditioner, Dog Run-Fenced In
Parking Spaces	4
Parking	Front Drive Access
Is Waterfront	Yes

### **Interior**

Interior	Laminate Flooring
Interior Features	Dishwasher-Built-In, Hood Fan, Refrigerator, Stacked Washer/Dryer, Stove-Electric, Air Conditioner-Window
Heating	Forced Air-1
# of Stories	1
Basement	None, No Basement

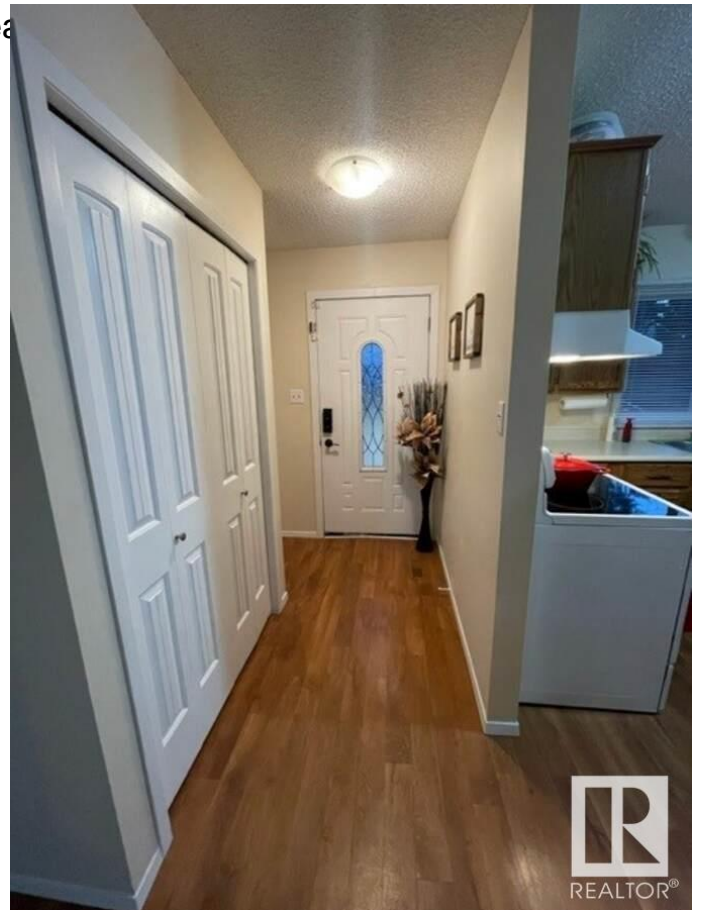
### **Exterior**

Exterior	Vinyl
Exterior Features	Backs Onto Lake, Cul-De-Sac, Lake Access Property, Lake View,

Landscaped, Playground Near  
Lot Description 34.56m x 43.42m Irregular  
Construction Wood Frame

**Additional Information**

Date Listed May 28th, 2023



DATA IS DEEMED RELIABLE BUT IS NOT GUARANTEED ACCURATE BY THE REALTORS® ASSOCIATION OF EDMONTON. COPYRIGHT 2024 BY THE REALTORS® ASSOCIATION OF EDMONTON. ALL RIGHTS RESERVED. Trademarks are owned or controlled by the Canadian Real Estate Association (CREA) and identify real estate professionals who are members of CREA (REALTOR®, REALTORS®) and/or the quality of services they provide (MLS®, Multiple Listing Service®)

Listing information last updated on May 10th, 2024 at 10:17am MDT