

## \$2,500,000 - 10357 82 Av Nw Nw, Edmonton

MLS® #E4330122

**\$2,500,000**

Bedroom, Bathroom, 12,175 sqft

Office on 0.00 Acres

Strathcona Junction, Edmonton, AB

Fantastic opportunity to own a 12,175 sq.ft. character retail/office building along Whyte Avenue. - 2-storey building demised into 6 tenant spaces. Building has partial occupancy giving potential to an owner/user looking to occupy or an investor to lease up vacant spaces. - All units including common areas have been renovated within the last 5 years. - Building recently underwent upgraded facade, as well as upgrades to HVAC

Built in 1911

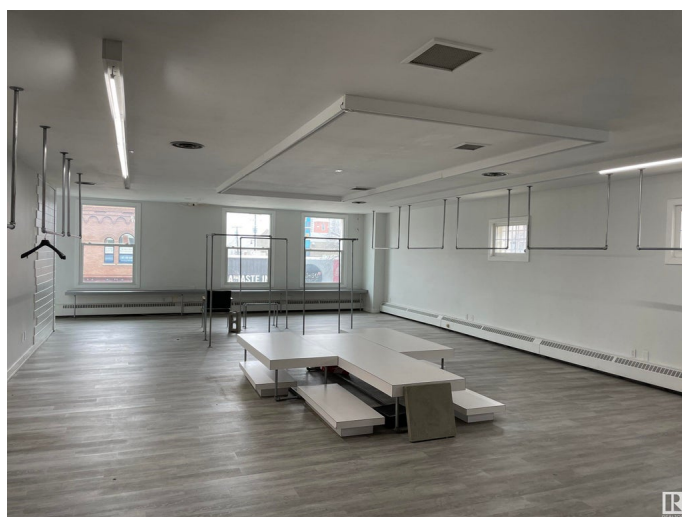
### Essential Information

MLS® #	E4330122
Price	\$2,500,000
Square Footage	12,175
Acres	0.00
Year Built	1911
Type	Office

### Community Information

Address	10357 82 Av Nw Nw
Area	Edmonton
Subdivision	Strathcona Junction
City	Edmonton
Province	AB
Postal Code	T6E 1Z9

### Exterior



Construction            Brick/Masonry

**Additional Information**

Date Listed            March 6th, 2023

Zoning                 DC1

DATA IS DEEMED RELIABLE BUT IS NOT GUARANTEED ACCURATE BY THE REALTORS® ASSOCIATION OF EDMONTON. COPYRIGHT 2024 BY THE REALTORS® ASSOCIATION OF EDMONTON. ALL RIGHTS RESERVED.Trademarks are owned or controlled by the Canadian Real Estate Association (CREA) and identify real estate professionals who are members of CREA (REALTOR®, REALTORS®) and/or the quality of services they provide (MLS®, Multiple Listing Service®)

Listing information last updated on May 14th, 2024 at 7:01pm MDT