

Courtesy Of Ron Pollock Of RE/MAX Excellence

# \$265,000 - 70 25527 Twp Rd 511 A, Rural Parkland County

MLS® #E4235765

**\$265,000**

0 Bedroom, 0.00 Bathroom,  
Rural on 1.04 Acres

Blackhawk Landing, Rural Parkland County,  
AB

This pie shaped parcel would be perfect for a large bungalow styled home with room for an oversized attached workshop garage. Black Hawk has many nice homes already built. This parcel backs onto 4.7 acre park reserve parcel with a perfect hill for sledding in the winter. From your new home in Black Hawk it only a 15 minute drive to west Edmonton and about the same to Nisku and the International Airport area.

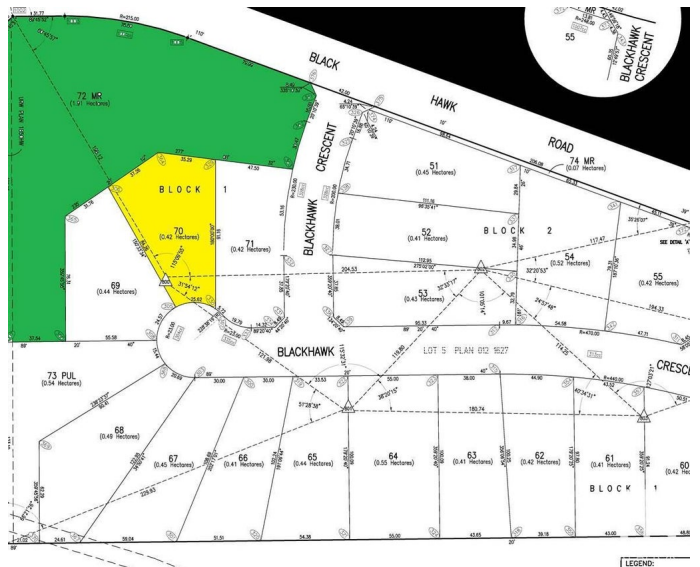


## Essential Information

MLS® #	E4235765
Price	\$265,000
Bathrooms	0.00
Acres	1.04
Type	Rural

## Community Information

Address	70 25527 Twp Rd 511 A
Area	Rural Parkland County
Subdivision	Blackhawk Landing
City	Rural Parkland County
County	ALBERTA
Province	AB



Postal Code T7Y 1A8

## Exterior

Exterior Features Cul-De-Sac, Environmental Reserve, Golf Nearby, Level Land, No Through Road, Park/Reserve, Backs Onto Park/Trees

## Additional Information

Date Listed March 30th, 2021

DATA IS DEEMED RELIABLE BUT IS NOT GUARANTEED ACCURATE BY THE REALTORS® ASSOCIATION OF EDMONTON. COPYRIGHT 2024 BY THE REALTORS® ASSOCIATION OF EDMONTON. ALL RIGHTS RESERVED. Trademarks are owned or controlled by the Canadian Real Estate Association (CREA) and identify real estate professionals who are members of CREA (REALTOR®, REALTORS®) and/or the quality of services they provide (MLS®, Multiple Listing Service®)

Listing information last updated on October 31st, 2024 at 6:01pm MDT